

1 Installation of PERI CAD

1.1 System Requirements

In order to install **PERI CAD** your computer or laptop should meet the following requirements:

Hardware requirements:

Processor:	Intel® Xeon® E3, Core i7 or silimar processor with 3,0 GHz or more
RAM:	8 GB RAM (min 16 GB)
Video card:	OpenGL®-capable workstation-class video card with 4 GB memory Recommended: Nvidia Quadro K2200 / M2000 oder P1000 mit 4 GB Speicher für 2D Anwender Nvidia Quadro K4200 / M4000 oder P2000 mit 4 GB für 3D Anwendungen oder Nvidia Quadro K5200 / M5000 oder P4000 mit 8 GB für gehobene 3D Anwendungen.
Monitor:	Alternative certified graphics cards can be found on the Autodesk homepage FullHD (1920x1080) or HD+, This version does not Support 4K monitors
Hard drive:	AutoCAD Architecture 2017 requires 2,6 GB, PERI CAD requires 2,8 GB
Installation drive:	USB or download
Mouse:	IntelliMouse (strongly recommended)

Software requirements:

Operating system:	Windows 7 x64, Windows 8.1 x64 and Windows 10 x64
Browser:	Internet Explorer 11 or higher
CAD Software:	AutoCAD Architecture 2017 for 64-bit with express tools and SP1

1.2 Update from former PERI CAD Versions

If a former **PERI CAD** version is installed on your computer, it is not possible to install **PERI CAD** parallel with the existing version. Before installing **PERI CAD** you must uninstall the former PERI CAD version. Your user specific data such as drawings, blocks etc. will not be deleted, but you should save them anyway for your own safety. Use the Windows control panel to uninstall the software. Afterwards please shut down and reboot your computer.

1.3 Preparing the Installation



Note

Make sure that you are installing the express tools when installing AutoCAD Architecture 2017 (Custom installation). Furthermore, it is essential that Service Pack 1 of AutoCAD Architecture 2017 is installed !!

Please check your system requirements and close all running programs before installing **PERI CAD**. You must have administrator permissions. Now you can start the installation of PERI CAD. To run **PERI CAD** afterwards, you do not need main user or administrator permissions. You can run the program as user with restricted permissions.

Run the installation. Once started you will see the following dialog:



Here you have the choice of selecting between English or German. This is the language used for the dialog that follows this one.

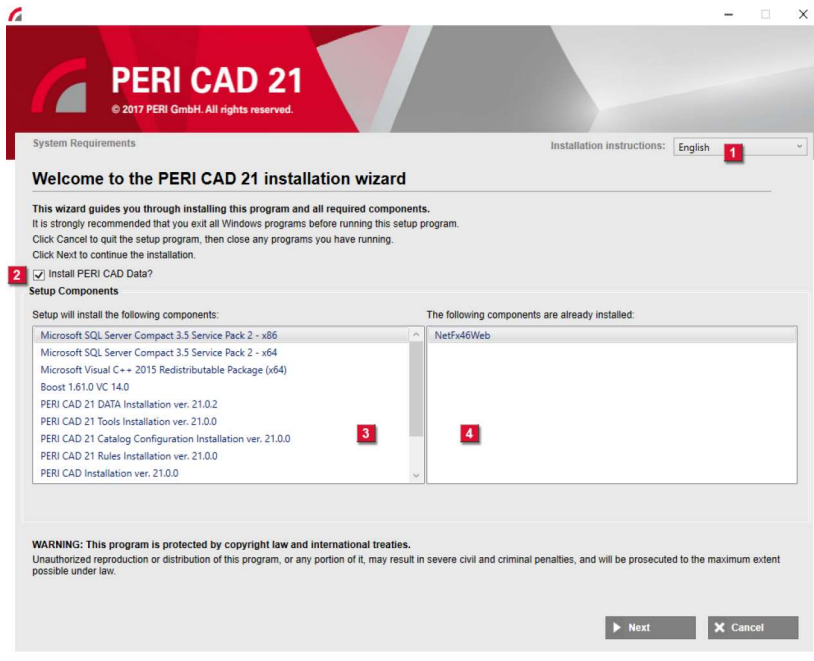


By clicking a button the corresponding application will be started.

The installation are running, when pressing the button "PERI CAD (inkl. DATA)".

1.4 Installation of PERI CAD

After you have clicked on the button "PERI CAD" (including DATA), the installation wizard starts and the following dialogue box appears on the screen depending on the already installed components.



1 Installation instructions

Set the language of the installation instructions.

2 Install PERI CAD Data

Activate this feature to run the DATA installation. Blocks cannot be installed with this menu.

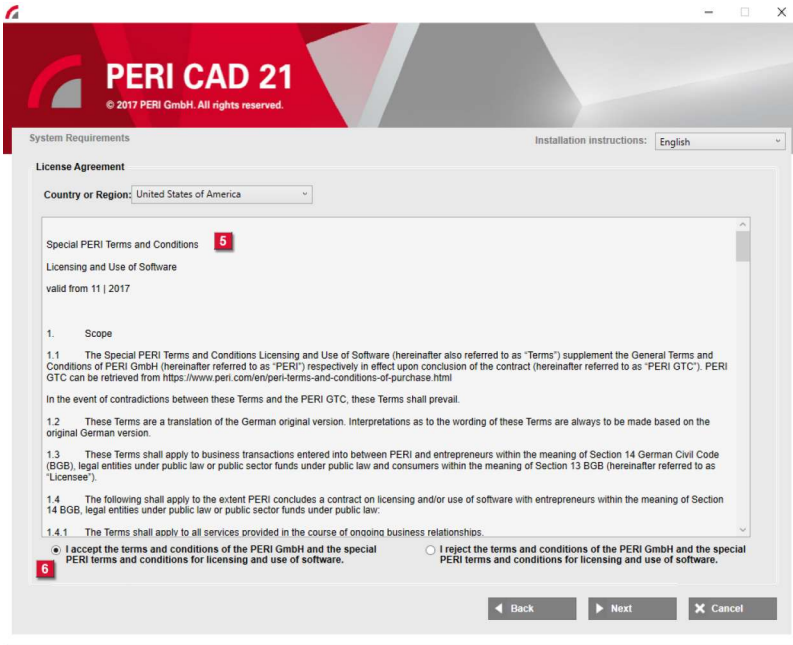
3 Setup will install the following components

A list of all components which are due to be installed can be viewed here.

4 The following components are already installed

A list of all components which have already been installed on your computer can be viewed here.

In order to continue the installation process, click "Next"; the next step is to accept "License Agreement"

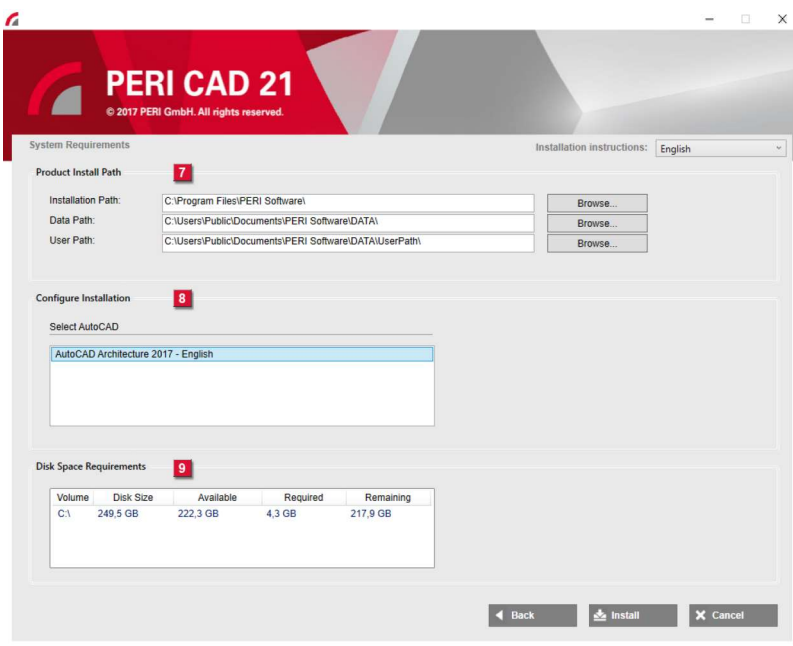


Please read the "License Agreement" **5** carefully. When accepting it, please activate option **6** and press "Next" to continue.

Node

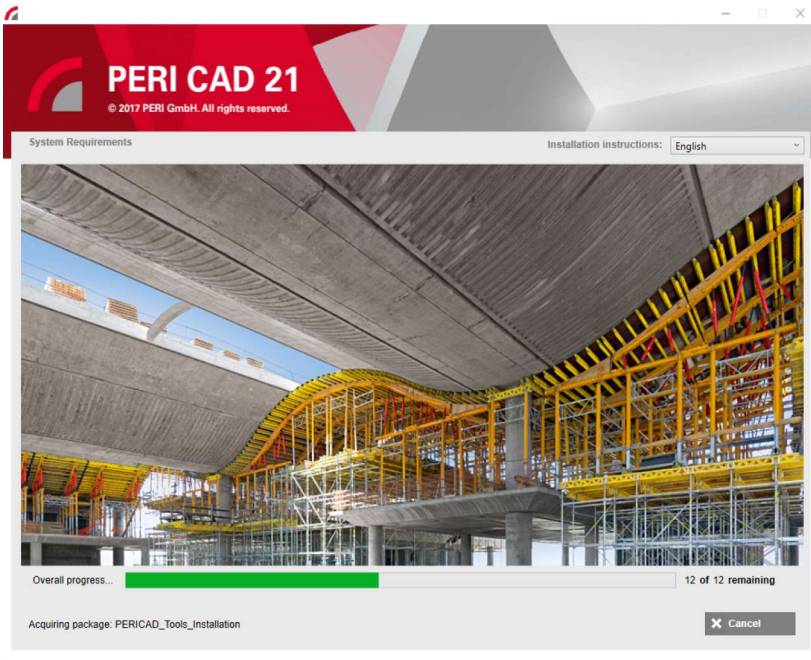
If you have another version than AutoCAD Architecture 2017 installed on your computer, you will not be able to select a program and you will therefore have to exit the installation at this point.

The next step is to change installation paths **7**, or alternatively, to accept default settings. All AutoCAD Architecture 2017 languages installed are displayed in the installation configurations window **8**. Now select the language you wish to connect with PERI CAD. In your case, it is best to choose English. In the area "Disk Space Requirements" **9**, you can see free space on your hard disk.

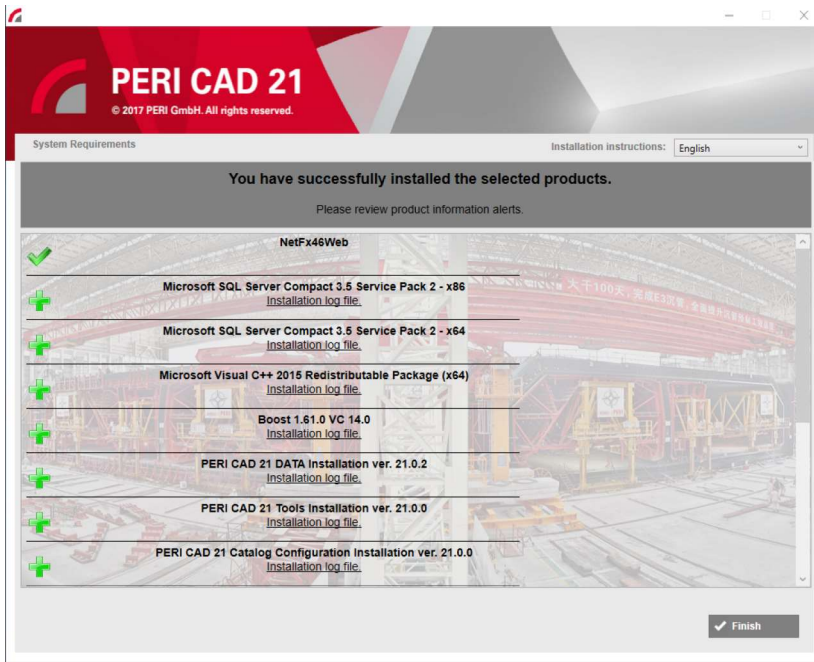


Click "Install" to start the installation process.

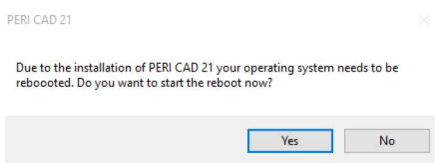
The packages will be unpacked and installed one after another. The installation progress will be displayed in the bottom part of the screen.



On completion of the installation, a summary will be provided. In addition, you can view a log file for each package installed.



Having clicked "Finish", you will be asked to restart your computer.

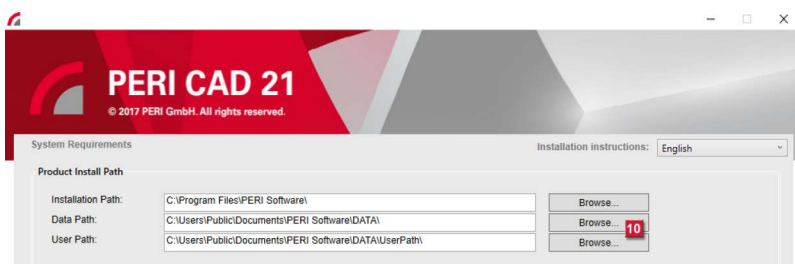


Please click "Yes".

1.4.1 Customized Installation

When you run typical installations, all PERI CAD data will be locally saved on your computer. This does not go for customized installations. The reason for saving Data Installation on a server could be, for example, to keep maintenance effort low.

Default paths to run PERI CAD installation.

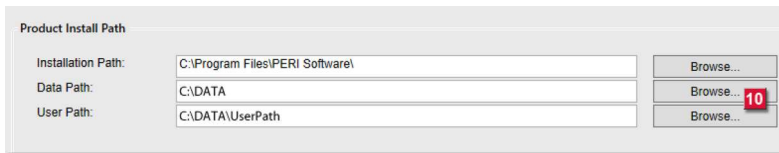


Data will be saved as follows:

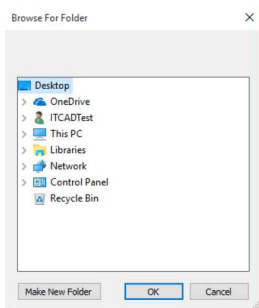
- Installation path for the PERI CAD Version
"C:\Program Files\PERI Software"
- You can find blocks for the PERI CAD catalogue in folder
"C:\Users\Public\Documents\PERI Software\DATA"

- Individual user blocks are installed in the following folder
"C:\Users\Public\Documents\PERI Software\DATA\UserPath"
- The blocks for the office catalogue will be installed in the following folder
"C:\Users\Public\Documents\PERI Software\DATA\macros"

At this point you have the opportunity to change the PERI CAD default path. In our example shown below, Data Installation is shifted to C:\DATA; the user path is stored on "C:\DATA\Userpath". The path shown has been randomly chosen and serves for illustration purposes only.



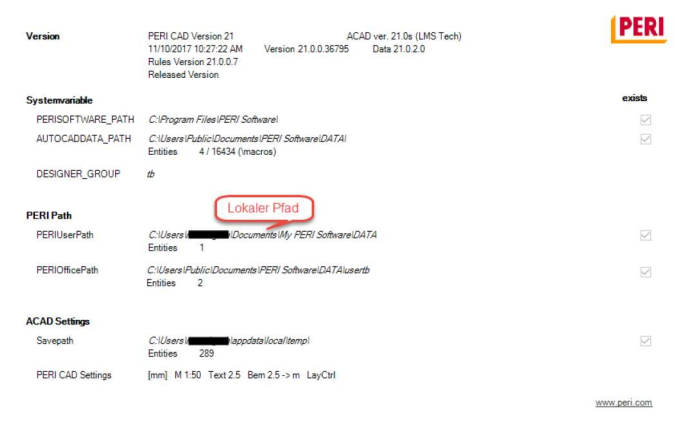
Click "**Browse..**" **10** for change the path.



The window "browse the folder" will appear where you can select the desired path and, if necessary, create a new file. This file can be stored locally or on a server. After the installation, please check "PERI CAD settings" (PERI CAD Tools/PERI CAD settings) for the right setting of the paths.

Check settings:

Click "**PERICAD Tools/PERI CAD settings**" in the menu bar to view an overview of the installation paths.



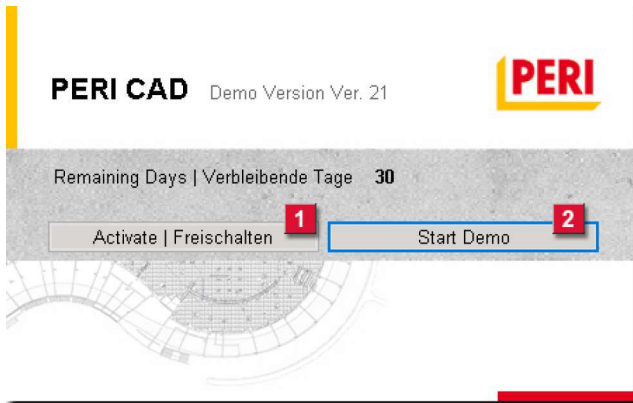
Node:

The installation of DATA on a network drive cannot be executed by following a common installation routine. In order to run the installation, you will have to use the Admin-Tool stored in the DATA folder. However, it is not advised to use this tool, because the integration of updates installed at a later point may prove difficult. Having run the installation with the admin tool, you will have to rewrite many values of the environment variables manually.

1.5 Activation of PERI CAD

1.5.1 General options

After the installation you have two options to work with PERI CAD. You can use the trial version for 30 days or you can activate the product. Therefore you have to order PERI CAD first before you are able to activate the license. Please contact your sales engineer for an detailed offer.



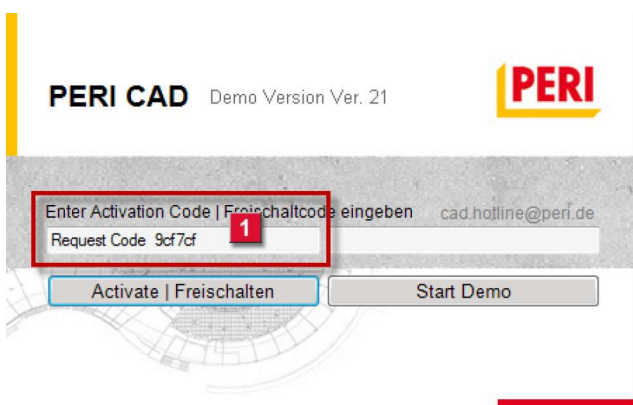
- 1 Activate | Freischalten** Click the button to generate an request code for activation.
- 2 Start Demo** Click the button to run the 30-day trial version.

1.5.2 Activate the PERI CAD License

Please take the following steps in order to activate your License.

1.5.2.1 Generate the Request Code

After clicking the button **Activate | Freischalten** the following windows appears.



The **Request Code** will be generated automatically and you can find it on the left site **1**.

1.5.2.2 Send the information to PERI

Please copy the Request Code and insert it into an email. In addition we need your Company address, the user name and at last the computer name.

Please fill in this [form](#) and send it back directly to susanne.mueller@peri.de or cad.hotline@peri.de

 **Note for students**

Confirmation of university is required. Instead of company address we need private address.


1.5.2.3 Generate the Activation Code

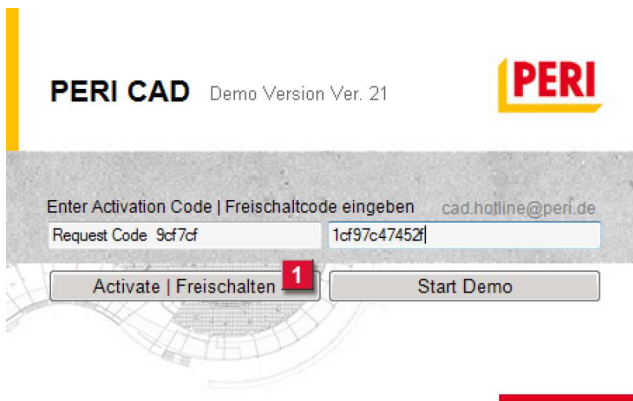
After we got this email we generate an Activation Code and forward this Code back to you.

1.5.2.4 Activate PERI CAD

Please take care that you need administrative permissions in order to activate the license. In addition you have to deactivate the "User Account Control (UAC)".

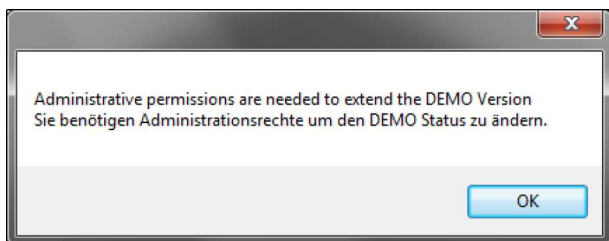
 **Please take note that you have to insert the activation code within 24 hours.**

Please copy the **Activation Code** into the activation windows of PERI CAD and press the button **Activate | Freischalten** .



Now the PERI CAD license is activated.

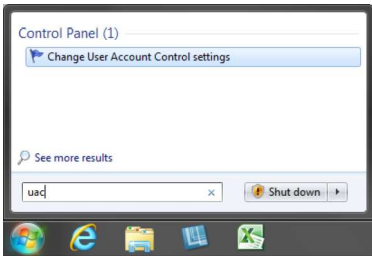
If you get the following message you have to check the **permissions** and the **UAC**.



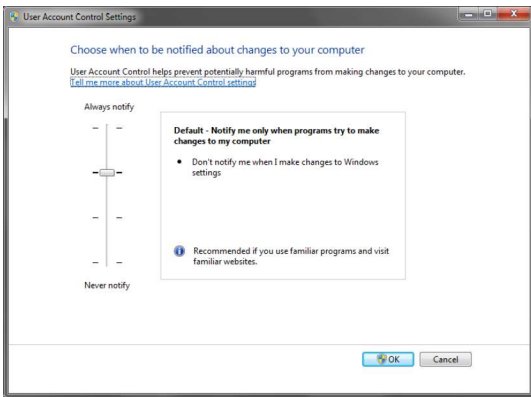
1.5.2.5 Switch the User Account Control (UAC) on | off

1.5.2.5.1 In Windows 7

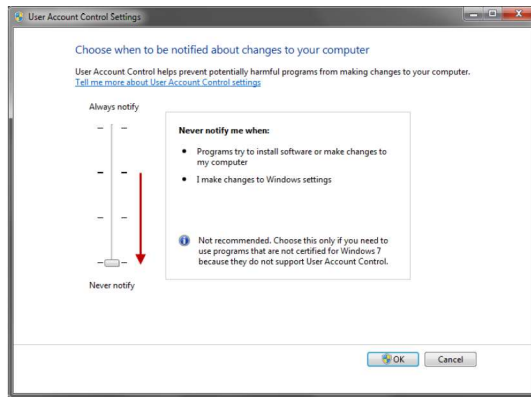
Press the "Start" Button and type in the field "Search programs and files" "UAC" and press enter.



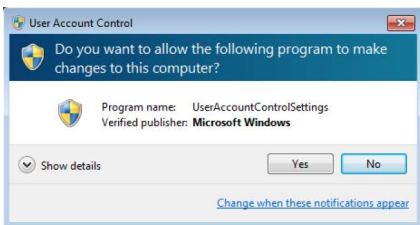
The following window appears.



Click on the sliding controller and put them down.

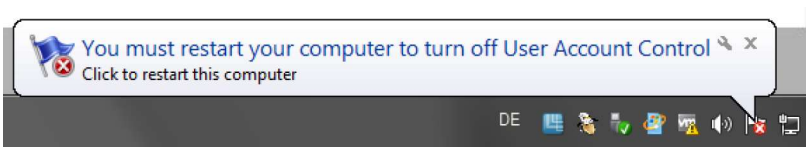


This warning appears.



Please click on "Yes".

After this action you have to restart your computer. See picture below.



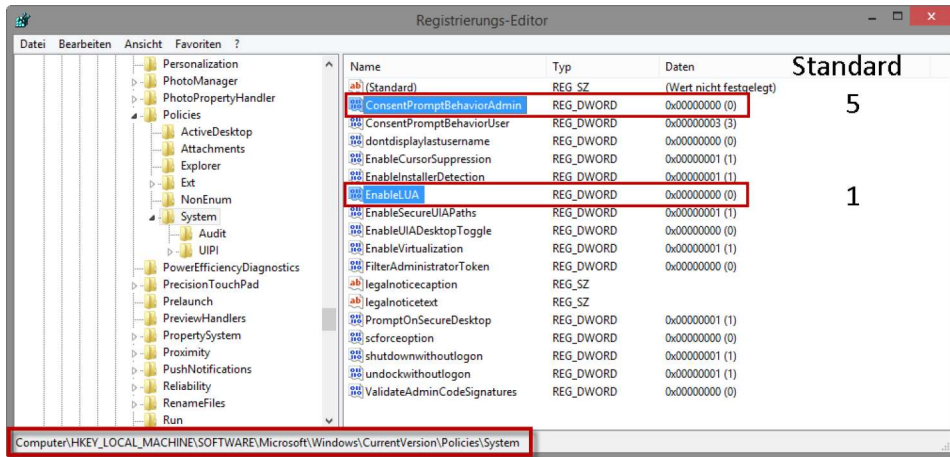
Now it is possible to activate PERI CAD. After the activation you can also activate the UAC again.

1.5.2.5.2 In Windows 8.x and Windows 10

From Windows 8 the "UAC" has been changed. Now it is no longer enough, down to push the slider for the permissions.

A further step is necessary.

1. Start the registry editor with admin permissions
2. Search the following path:
"HKEY_LOCAL_MACHINE\SOFTWARE\Microsoft\Windows\CurrentVersion\Policies\System"
3. Change the both entries **"ConsentPromptBehaviorAdmin"** and **"EnableLUA"** and set the value to "0".



4. Restart your computer for activate the changes



Note

Please change the values after the activation back to the standard.

Standard is ...

ConsentPromptBehaviorAdmin = 5
 EnableLUA = 1